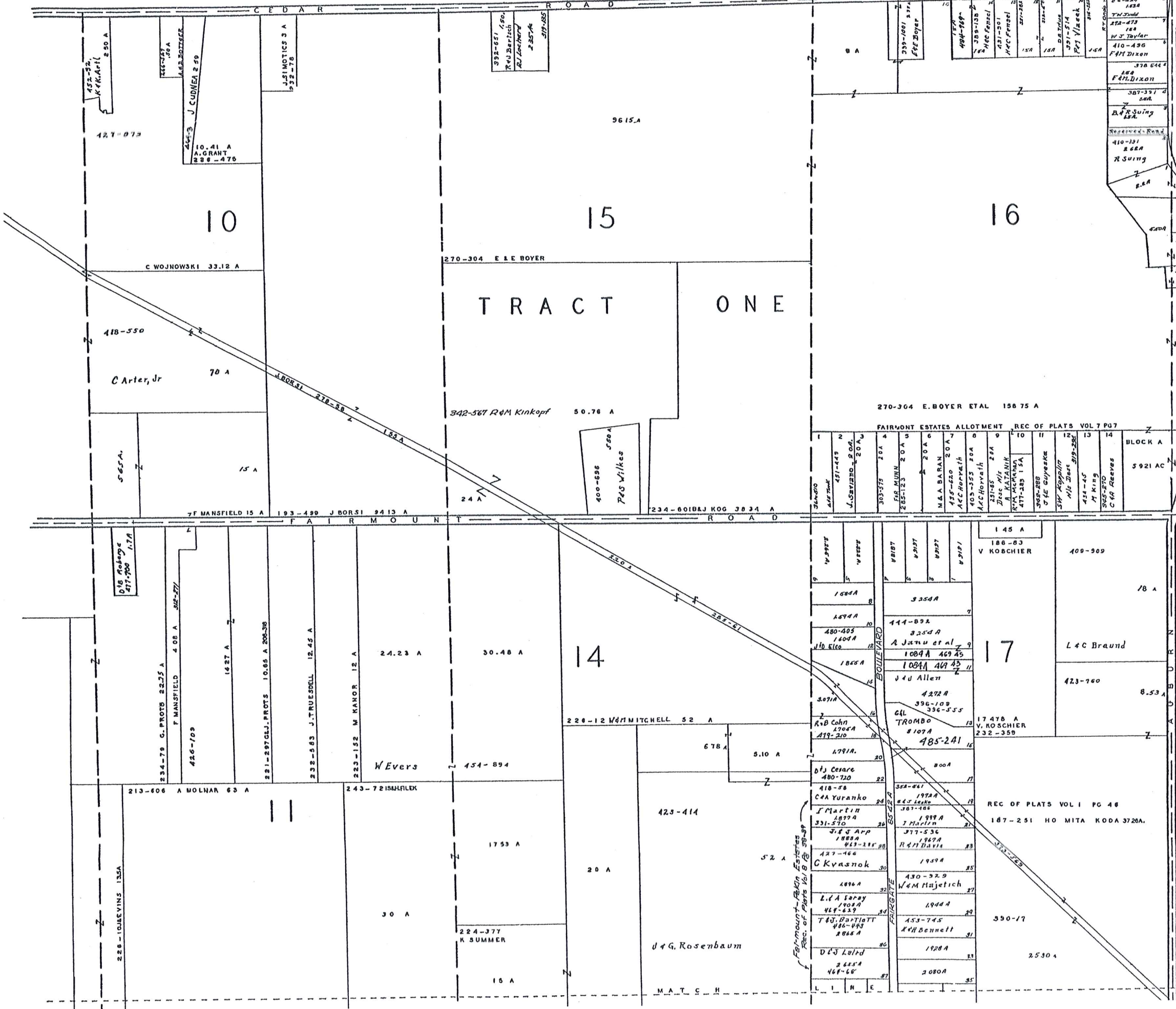


M U N S O N T O W N S H I P

Auburn-Cedar Estates Vol 7-Pg 26

**NEWBURY
TWP - B
NOT TO SCALE
1968**



FAIRMONT ESTATES ALLOTMENT REC OF PLATS VOL 7 PG 7

LOT	OWNER	ACREAGE
1	FAIRMONT ESTATES	20 A
2	FAIRMONT ESTATES	20 A
3	FAIRMONT ESTATES	20 A
4	FAIRMONT ESTATES	20 A
5	FAIRMONT ESTATES	20 A
6	FAIRMONT ESTATES	20 A
7	FAIRMONT ESTATES	20 A
8	FAIRMONT ESTATES	20 A
9	FAIRMONT ESTATES	20 A
10	FAIRMONT ESTATES	20 A
11	FAIRMONT ESTATES	20 A
12	FAIRMONT ESTATES	20 A
13	FAIRMONT ESTATES	20 A
14	FAIRMONT ESTATES	20 A

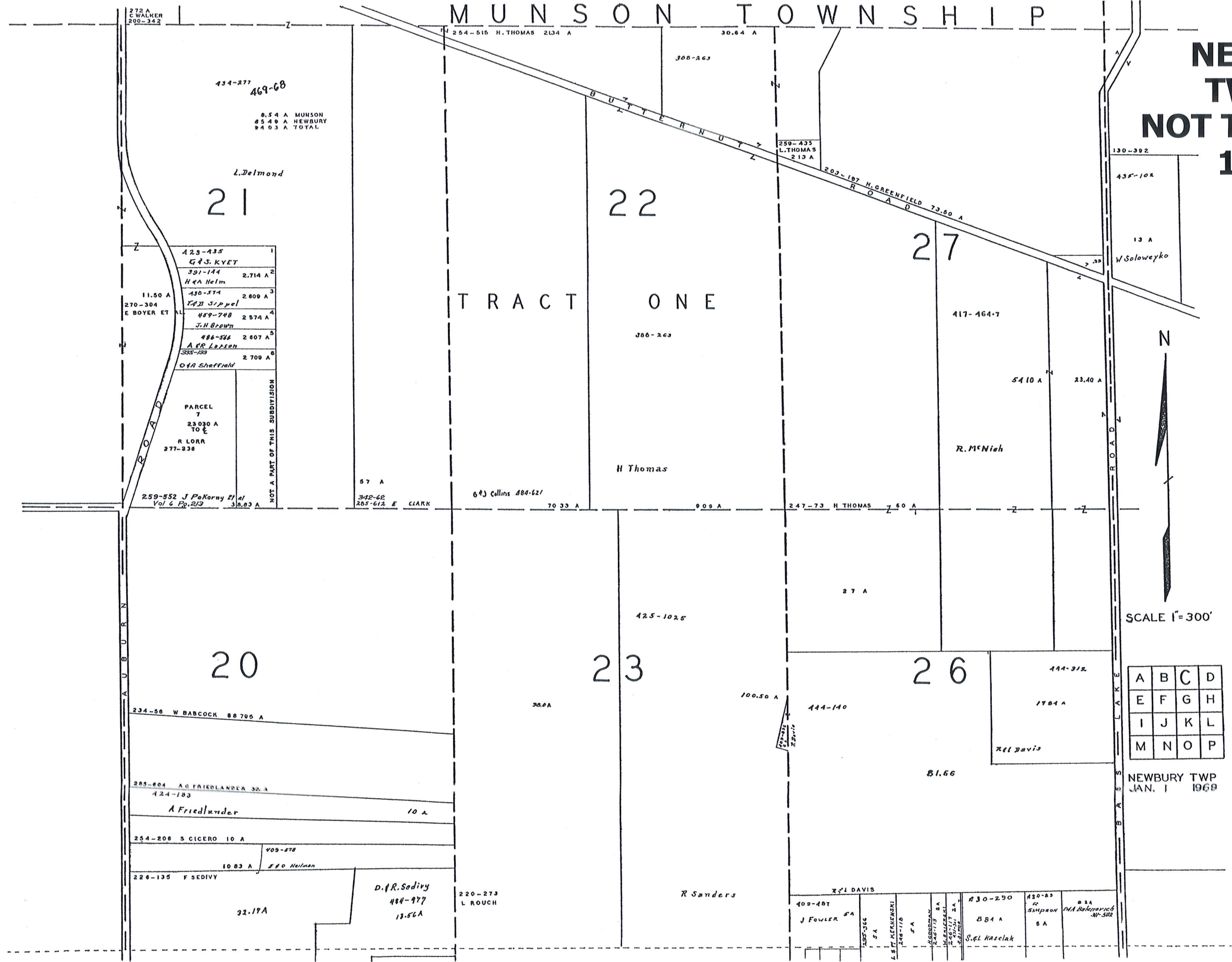
SCALE 1"=300'

A	B	C	D
E	F	G	H
I	J	K	L
M	N	O	P

NEWBURY TWP
JAN. 1 1968

MUNSON TOWNSHIP

**NEWBURY
TWP - C
NOT TO SCALE
1968**



272 A
C WALKER
200-342

434-277
469-68

0.54 A MUNSON
45.49 A NEWBURY
94.03 A TOTAL

L. Delmond

21

1	423-435 G & S. KYET
2	391-144 H & A Helm 2.714 A
3	430-574 T & D Sippel 2.809 A
4	489-748 J. H. Brown 2.574 A
5	486-566 A & R Lassen 2.607 A
6	335-139 O & A Sheffield 2.709 A

PARCEL
7
23.030 A
TO E
R LORR
377-238

NOT A PART OF THIS SUBDIVISION

259-552 J. P. Korny et al
Vol 6 Pg. 213 30.83 A

TRACT ONE

22

H Thomas

6 & J Collins 884-621

70.33 A

9.99 A

247-73 H THOMAS 7.60 A

27

R. McNish

54.10 A 23.40 A

130-392

435-104

13 A

W. Soloweyko



SCALE 1" = 300'

A	B	C	D
E	F	G	H
I	J	K	L
M	N	O	P

NEWBURY TWP
JAN. 1 1968

20

234-56 W BABCOCK 88.795 A

285-604 A O FRIEDLANDER 30.4
424-183

A Friedlander 10 A

254-208 S CICERO 10 A

409-578
F & O Helman 10.83 A

226-135 F SEDIVY

32.17 A

D. & R. Sedivy
484-977
13.56 A

220-273
L ROUCH

23

425-1025

36.0 A

100.50 A

444-140

26

81.66

444-375

1784 A

R. L. Davis

409-481
J FOWLER SA

1505-366 SA

1248-118 SA

1400-241 SA

1246-119 SA

1246-119 SA

1246-119 SA

1246-119 SA

1246-119 SA

1246-119 SA

1246-119 SA

1246-119 SA

1246-119 SA

R. L. DAVIS

884 A

S. L. Kaselak

430-250

430-83

R. SIMPSON

8 A

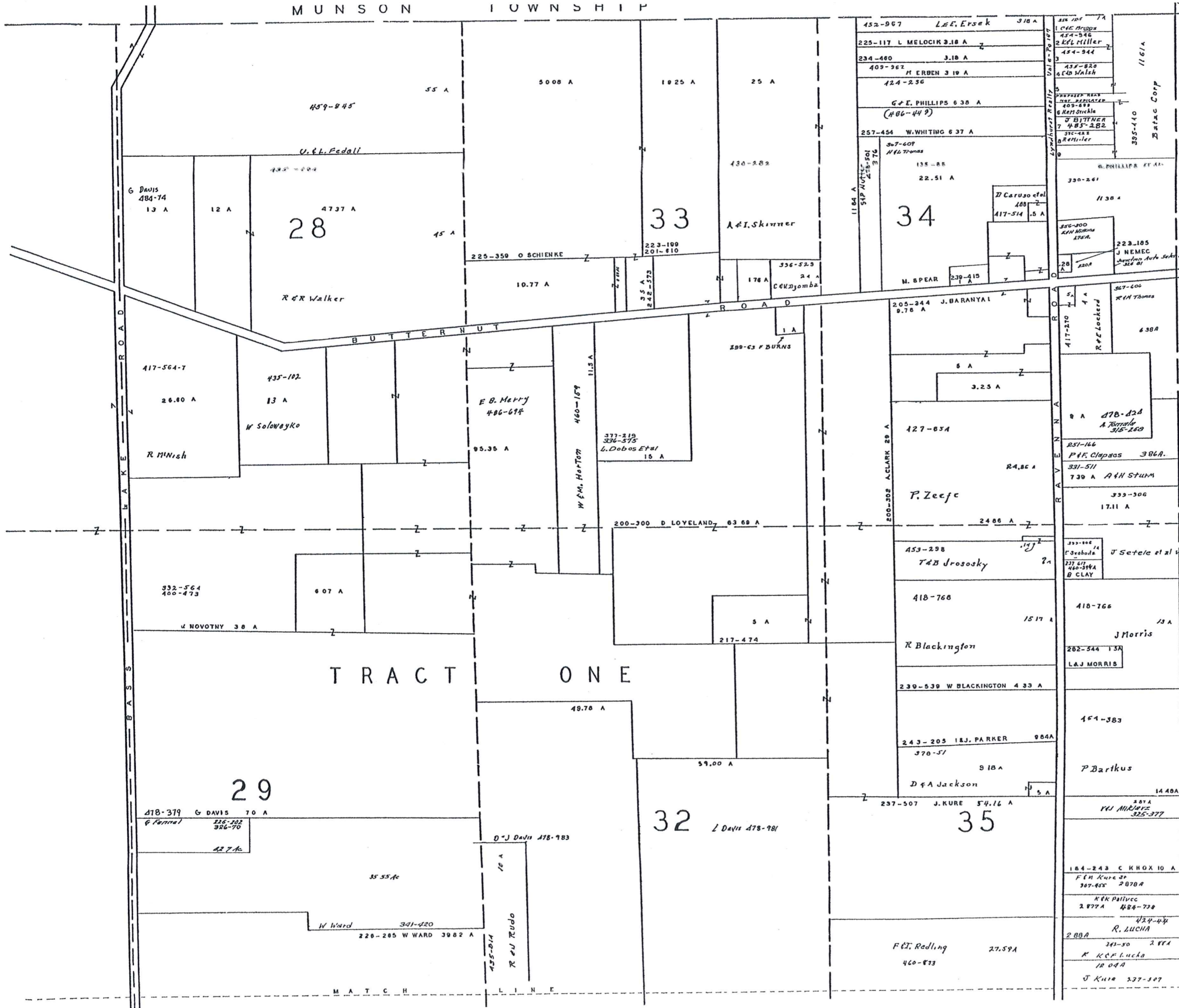
8 1/2 A

DNA Bakerovich

NEWBURY TWP - D

NOT TO SCALE

1968

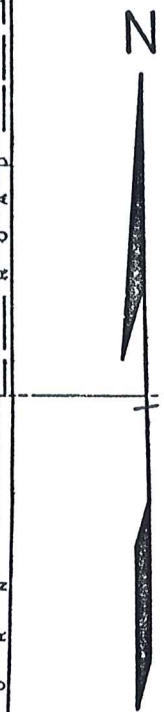
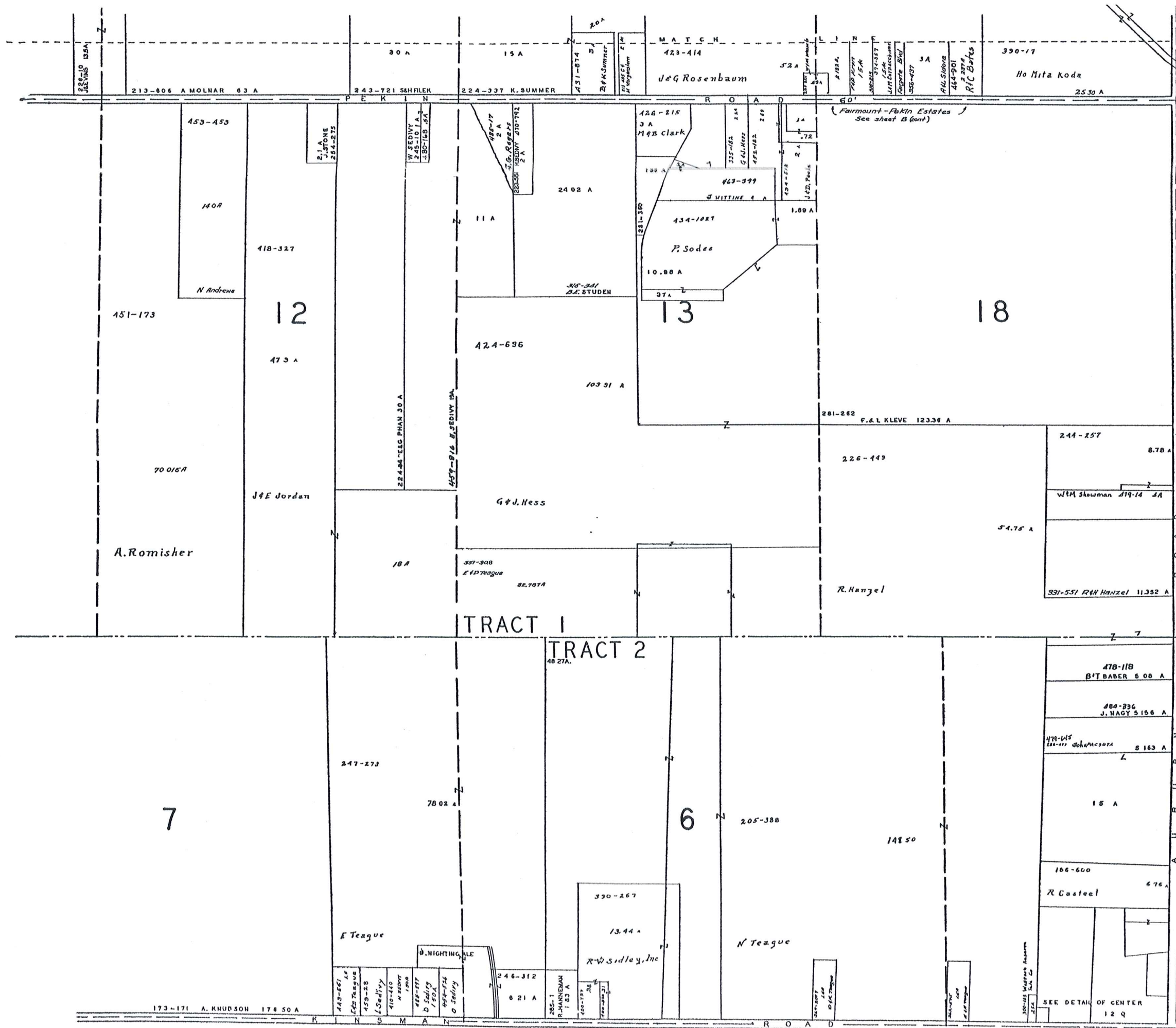


SCALE 1"=300'

A	B	C	D
E	F	G	H
I	J	K	L
M	N	O	P

NEWBURY TWP/P.
JAN. 1 1968

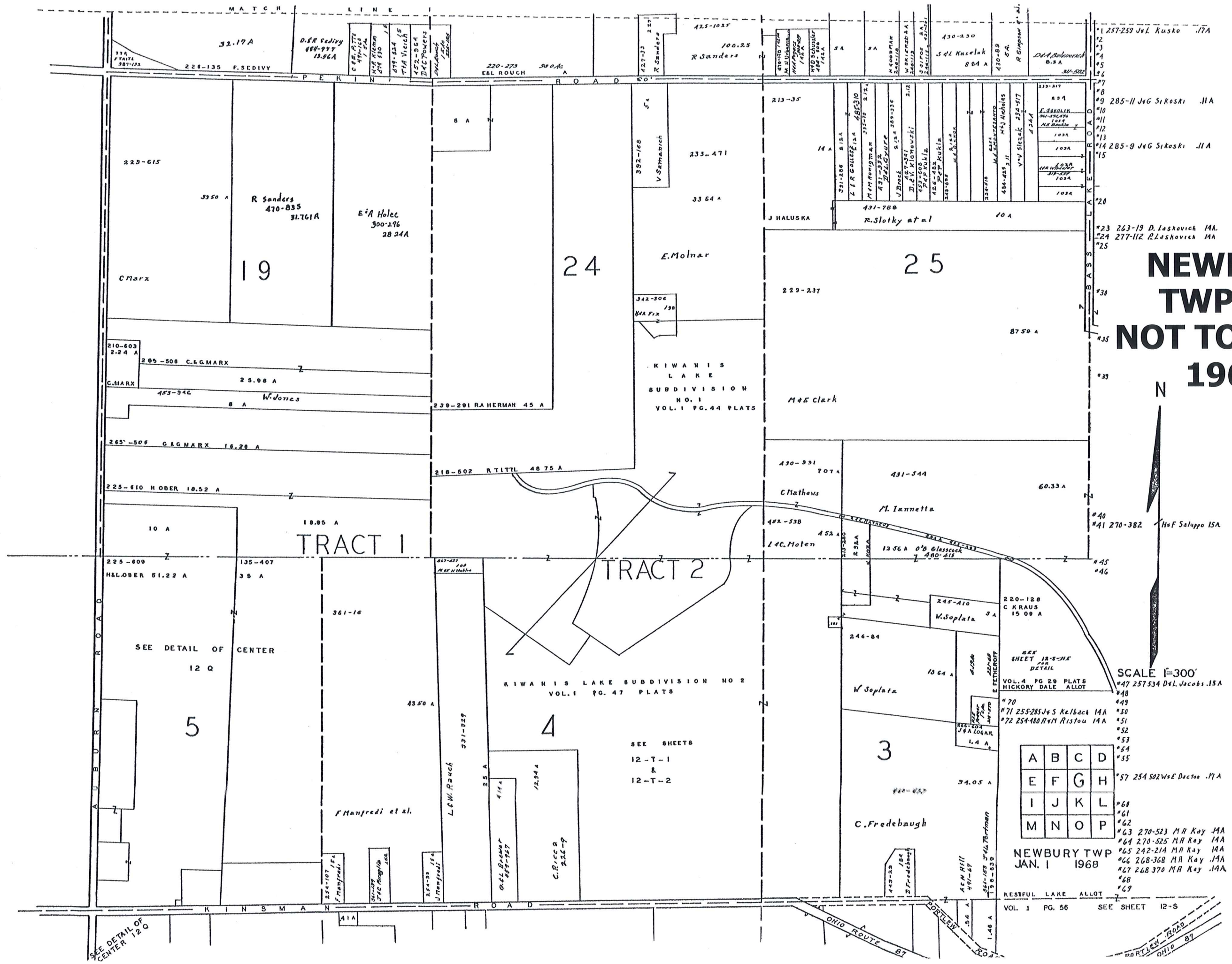
NEWBURY TWP - F NOT TO SCALE 1968



5
SCALE 1" = 300'

A	B	C	D
E	F	G	H
I	J	K	L
M	N	O	P

NEWBURY TWP.
JAN. 1 1968



NEWBURY TWP - G NOT TO SCALE 1968



SCALE 1"=300'

A	B	C	D
E	F	G	H
I	J	K	L
M	N	O	P

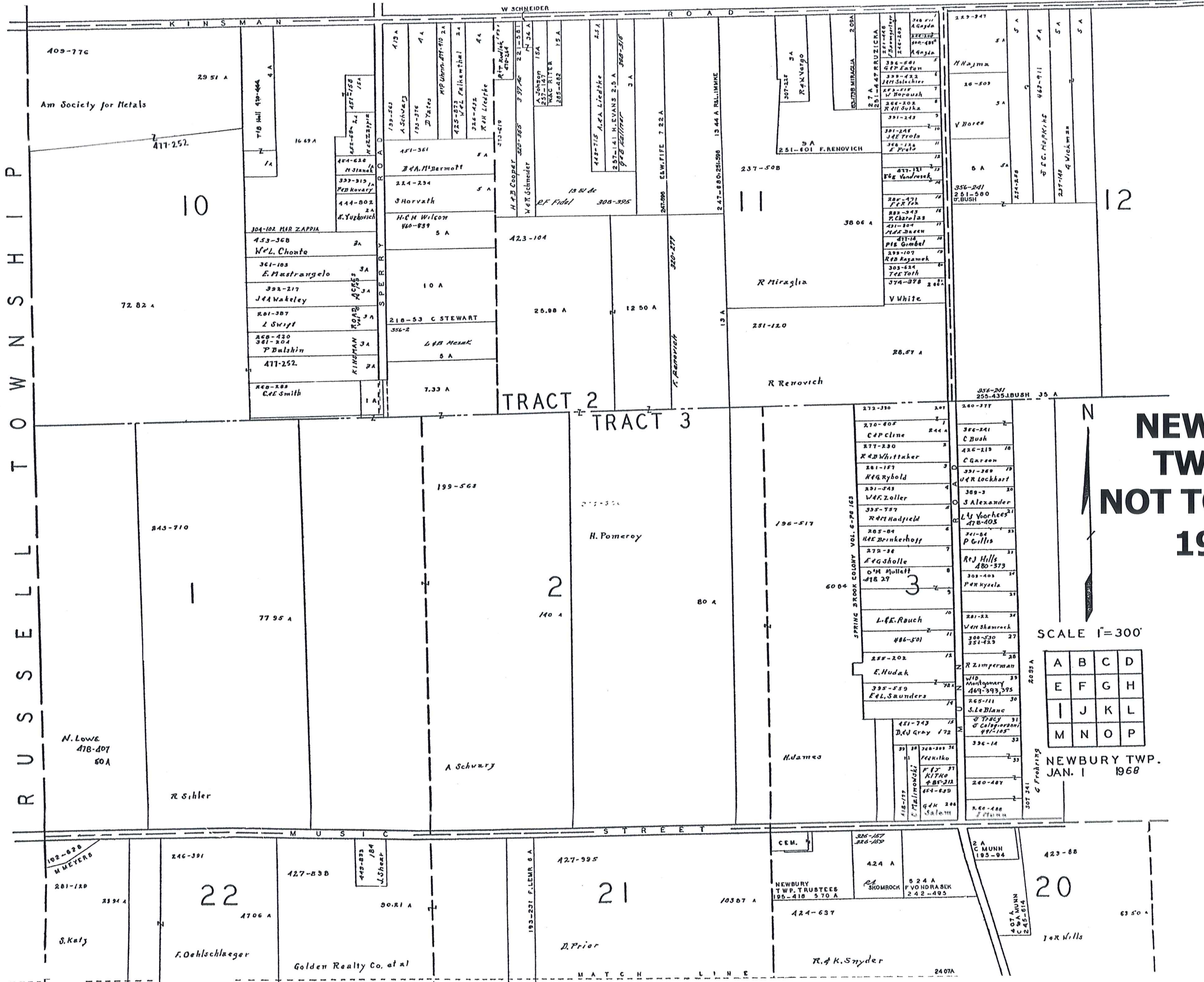
NEWBURY TWP
JAN. 1 1968
RESTFUL LAKE ALLOT
VOL. 1 PG. 56 SEE SHEET 12-S

- #1 257-259 J & L Kusko .17A
- #2
- #3
- #4
- #5
- #6
- #7
- #8
- #9 285-11 J & G Si Koski .11A
- #10
- #11
- #12
- #13
- #14 285-9 J & G Si Koski .11A
- #15
- #16
- #17
- #18
- #19
- #20
- #21
- #22
- #23 263-19 D. Lashovich .1A
- #24 277-112 R. Lashovich .1A
- #25
- #26
- #27
- #28
- #29
- #30
- #31
- #32
- #33
- #34
- #35
- #36
- #37
- #38
- #39
- #40
- #41 270-382 Ho F Saloppo .15A
- #42
- #43
- #44
- #45
- #46
- #47 257-534 D & L Jacobs .15A
- #48
- #49
- #50
- #51
- #52
- #53
- #54
- #55
- #56
- #57 254-502 W & E Dactor .17A
- #58
- #59
- #60
- #61
- #62
- #63 270-523 M H Kay .1A
- #64 270-525 M H Kay .1A
- #65 242-214 M H Kay .1A
- #66 268-368 M H Kay .1A
- #67 268-370 M H Kay .1A
- #68
- #69

SEE DETAIL OF CENTER 12 Q

SEE SHEETS
12-Y-1
&
12-T-2

R U S S E L L T O W N S H I P



NEWBURY TWP - I NOT TO SCALE 1968



SCALE 1"=300'

A	B	C	D
E	F	G	H
I	J	K	L
M	N	O	P

NEWBURY TWP.
JAN. 1 1968

M A T C H L I N E

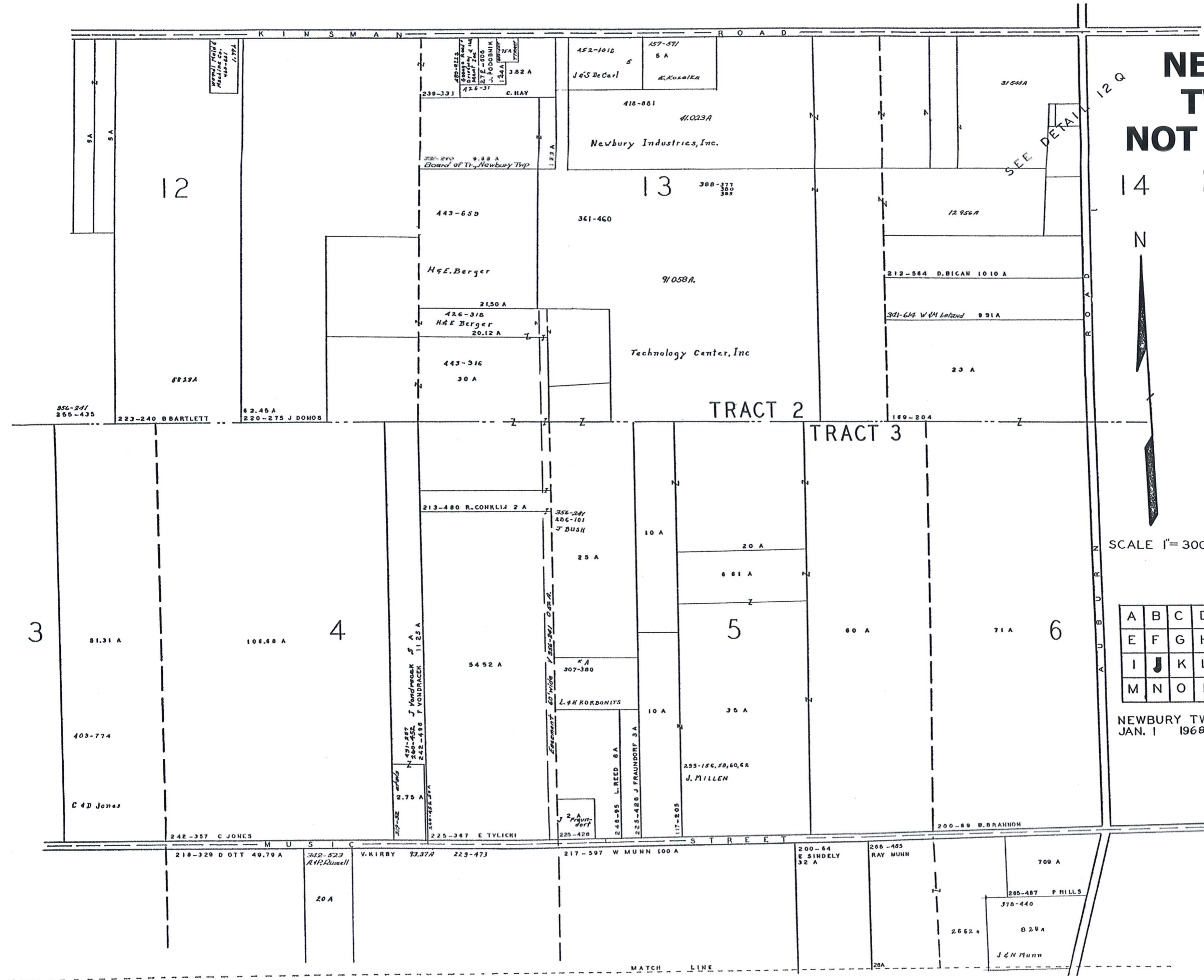
NEWBURY TWP - J NOT TO SCALE 1968



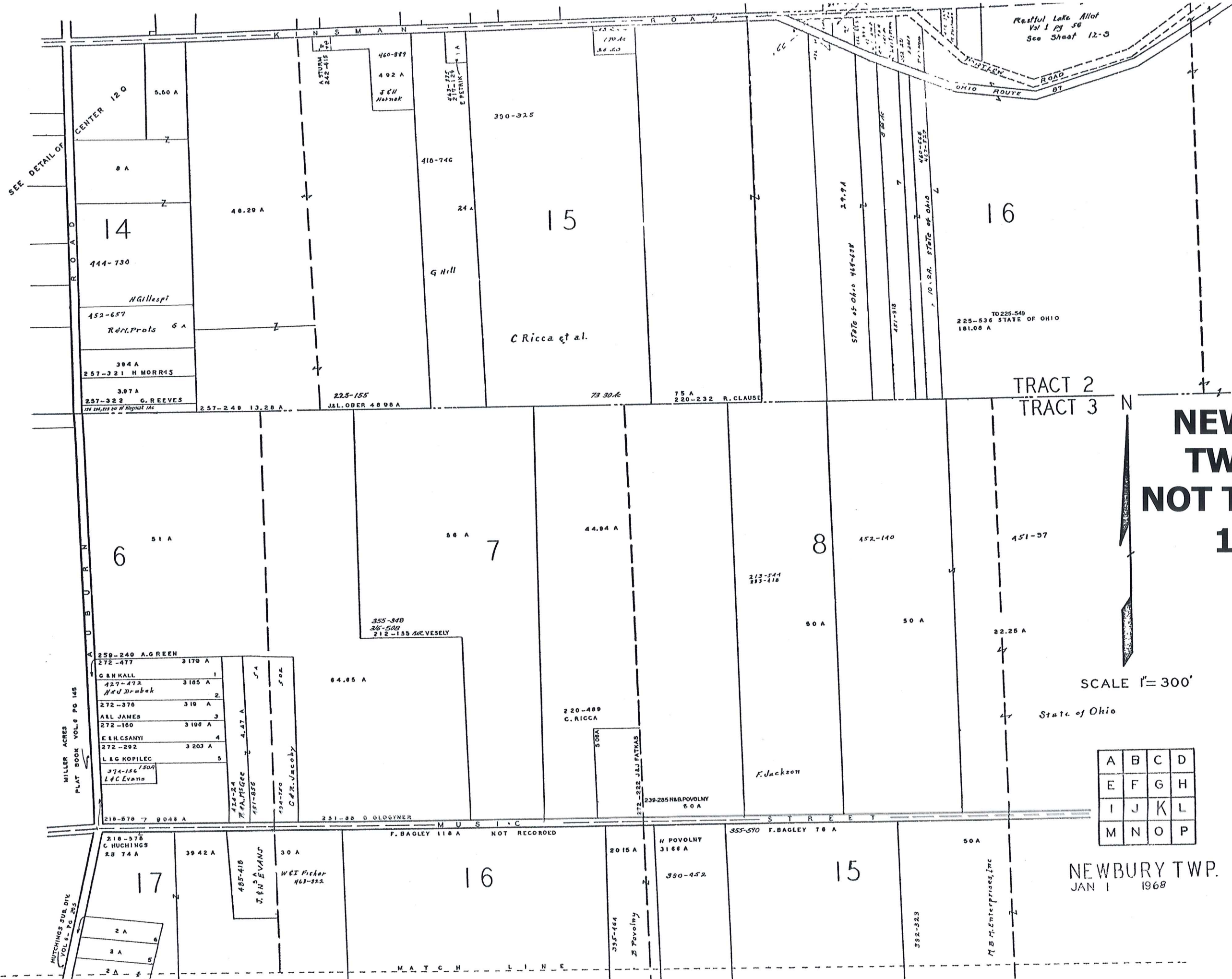
SCALE 1" = 300'

A	B	C	D
E	F	G	H
I	J	K	L
M	N	O	P

NEWBURY TWP.
JAN. 1 1968



MATCH LINE



Restful Lake Allot
Vol 1 pg 50
See Sheet 12-5

SEE DETAIL OF
ROAD

CENTER 120

14

444-730

Gillespi

452-657

Ret. Prots 6 A

394 A

257-321 H MORRIS

307 A

257-322 G. REEVES

SEE DETAIL OF ROAD

ROAD

6

51 A

259-240 A. GREEN

272-477 3170 A

G. B. KALL

427-472 3105 A

H. J. Drabek

272-376 310 A

A. L. JAMES

272-160 3108 A

E. H. CSANYI

272-202 3203 A

L. E. KOPIEC

374-156/509

L. C. Evans

218-578 7 9048 A

218-578 C HUCHINGS

R. B. 74 A

17

2 A

3 A

4 A

5 A

6 A

ASTORUM

242-415

460-887

492 A

J. E. H. Metzger

443-225

219-129

E. PETRIK

410-746

24 A

G Hill

390-325

15

C Ricca et al.

73 30.6

75 A

220-232 R. CLAUSE

225-155

J. L. OBER 48 98 A

257-249 13.28 A

355-348

36-508

212-155 AN. VESELY

84.85 A

220-489

C. RICCA

508 A

212-222 J. L. FATMAS

239-285 H. POVOLNY

6.0 A

F. Jackson

210-578 7 9048 A

218-578 C HUCHINGS

R. B. 74 A

3942 A

485-418

J. E. N. EVANS

30 A

W. E. Fisher

467-322

2015 A

H. POVOLNY

3166 A

390-452

355-570 F. BAGLEY 78 A

50 A

M. B. Enterprises, Inc

392-323

MATCH LINE

TRACT 2

TRACT 3

**NEWBURY
TWP - K
NOT TO SCALE
1968**

SCALE 1" = 300'

State of Ohio

A	B	C	D
E	F	G	H
I	J	K	L
M	N	O	P

NEWBURY TWP.
JAN 1 1968

RESTFUL LAKE ALLOTMENT
VOL 1 PG.58
PLATS

16

16100 A

STATE OF OHIO
225 - 536 TO 549

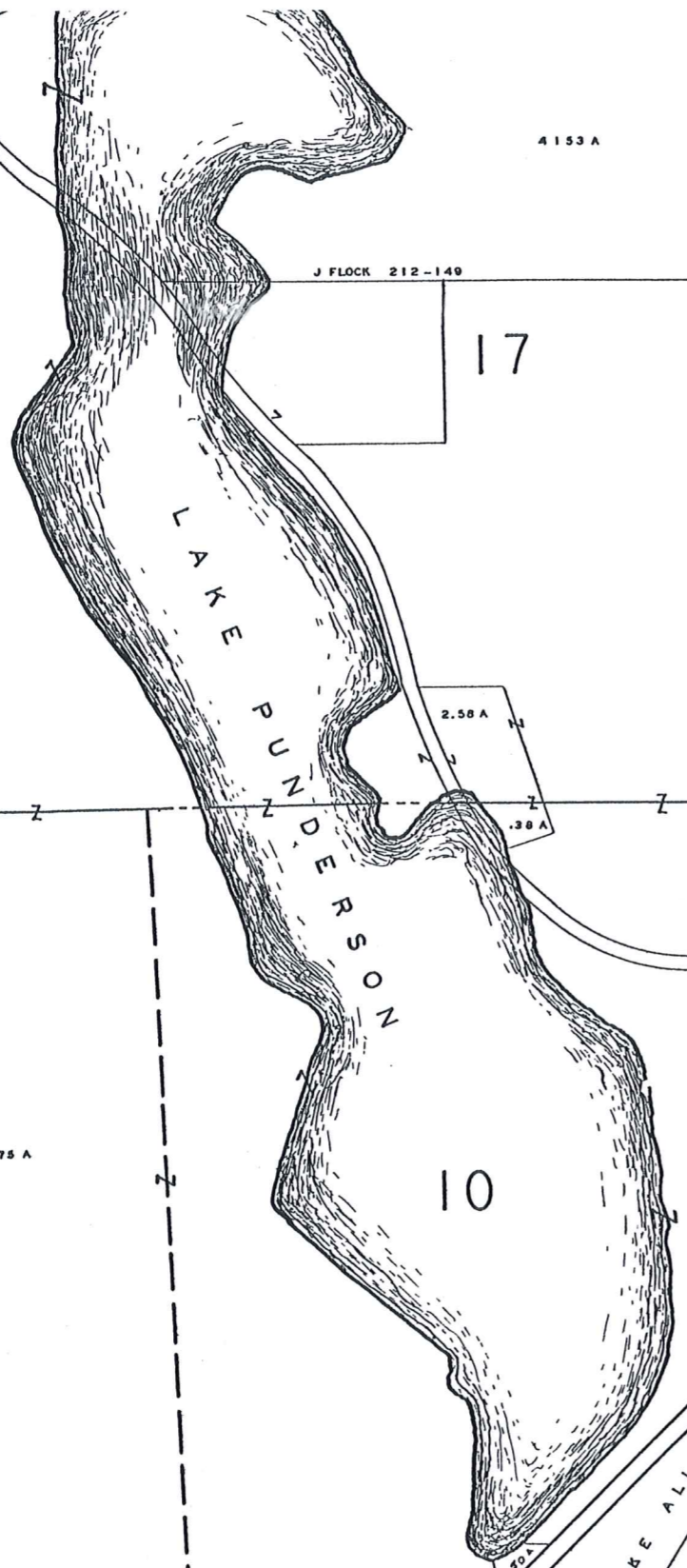
TRACT 2

451-57

9

100 A

State of Ohio



4153 A

J FLOCK 212-149

17

L
A
K
E
P
U
N
D
E
R
S
O
N

2.58 A

.30 A

10

124.75 A

Dep Nat Res
484-11
6 A

409-1017
2832 A
Newbury Disposal, Inc

417-863
25.03 A
J. Holmes

201-584
2625 A
A. Kolenich

254-576
R Benton
C Powell

W. BAILEY 260-209
130 A
243-631
65 A
M. POWELL

H. Dal Mastro
7.93 A
427-660
480-219
6.7 A
206-61
S & E. Boyd
C. HUELSMAN
484-425-787

186-259 R JELLIFFE
233 A
210-445 HIL GARDY
220 A
228-141 WEN DINGLE
27 A
W.A. JMCLOURE 268-261
27 A
443-321
M.H. Villanueva
225 A
425-773
J & G Almond
222 A
288-156 CRAIGLIN
1731 A
289-834 C.E.D. HURRY

2013 A
389-616
457-662
E. Kaufman

12
154-371 R FRIED
776 A

12 A
728 A
700 A
4.54 A
A Volosy
426-715

NEWBURY TWP - L NOT TO SCALE 1968

W
P
.
B
U
R
T
O
N
T
W
P



SCALE 1" = 300'

A	B	C	D
E	F	G	H
I	J	K	L
M	N	O	P

NEWBURY TWP.
JAN. 1 1968

392-523 M.D. Enterprises, Inc.	1220A	480-358 10A 484-282 15 w Gordon	245-200 1004A L. SHARPLEY 244-428 144 C. COOPER	281-465 W CLEVELAND 3 A 547 A	254-180 W CLEVELAND 0.55 A UNPLATTED	259-407 KIDD
-----------------------------------	-------	---	--	--	---	--------------

MUSIC STREET
D&K HANISH 149 04 A
221-250

281-465
W CLEVELAND
3 A
547 A

254-180 W CLEVELAND
0.55 A UNPLATTED

PUNDERSOHN LAKE ALLOT. #1
VOL. 2 - PG. 29 PLATS

PUNDERSOHN LAKE DEVELOPMENT
4850 A
VOL 4 - PG 19
PLATS
See Sheet 12-2

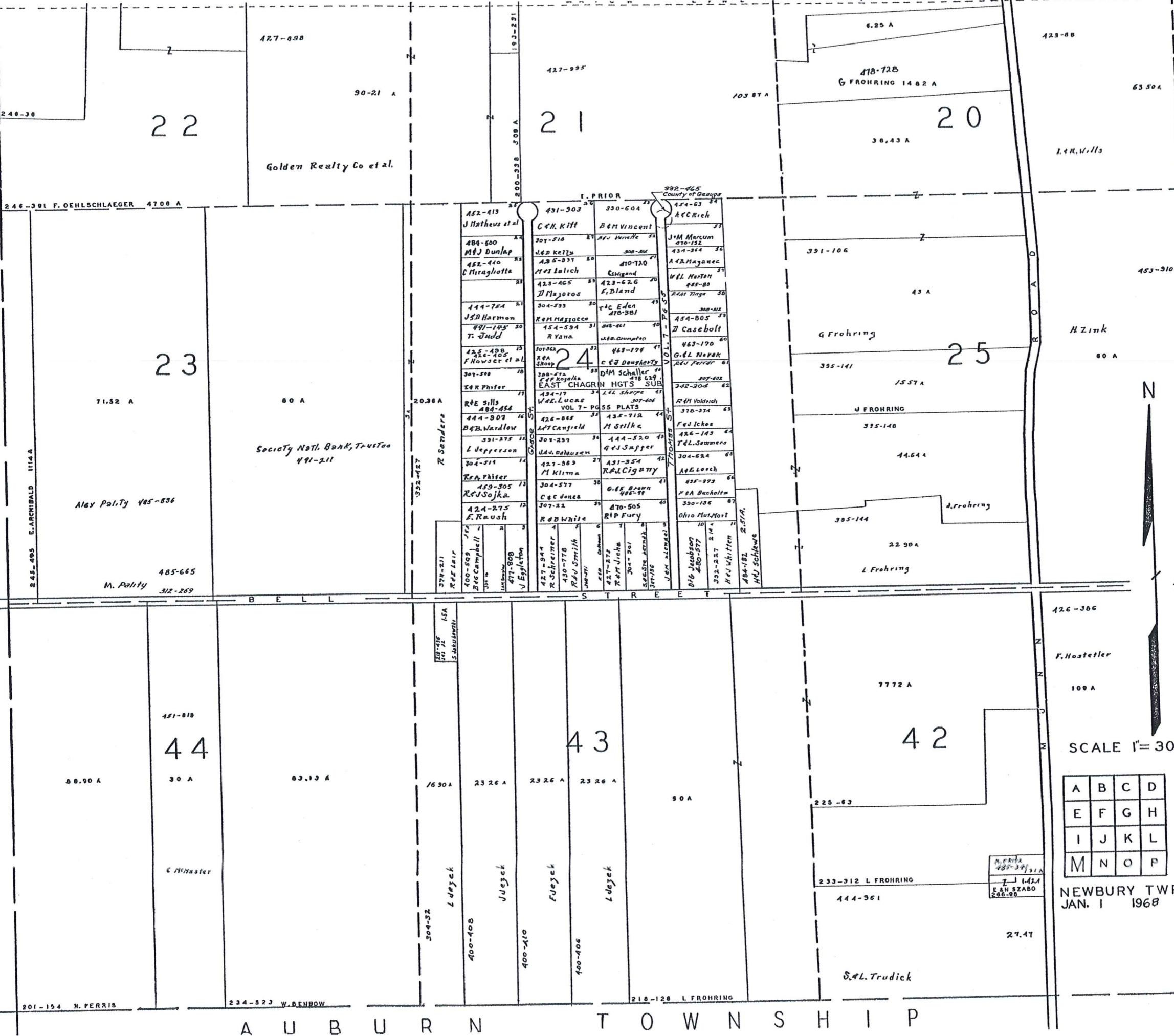
DEJECTORY
89-111

MATCH LINE

12
154-371 R FRIED
776 A

12 A
728 A
700 A
4.54 A
A Volosy
426-715

R U S S E L L T O W N S H I P



NEWBURY TWP - M NOT TO SCALE 1968

THREE TRACT

A	B	C	D
E	F	G	H
I	J	K	L
M	N	O	P

NEWBURY TWP. JAN. 1 1968

SCALE 1"=300'

201-154 N. FERRIS

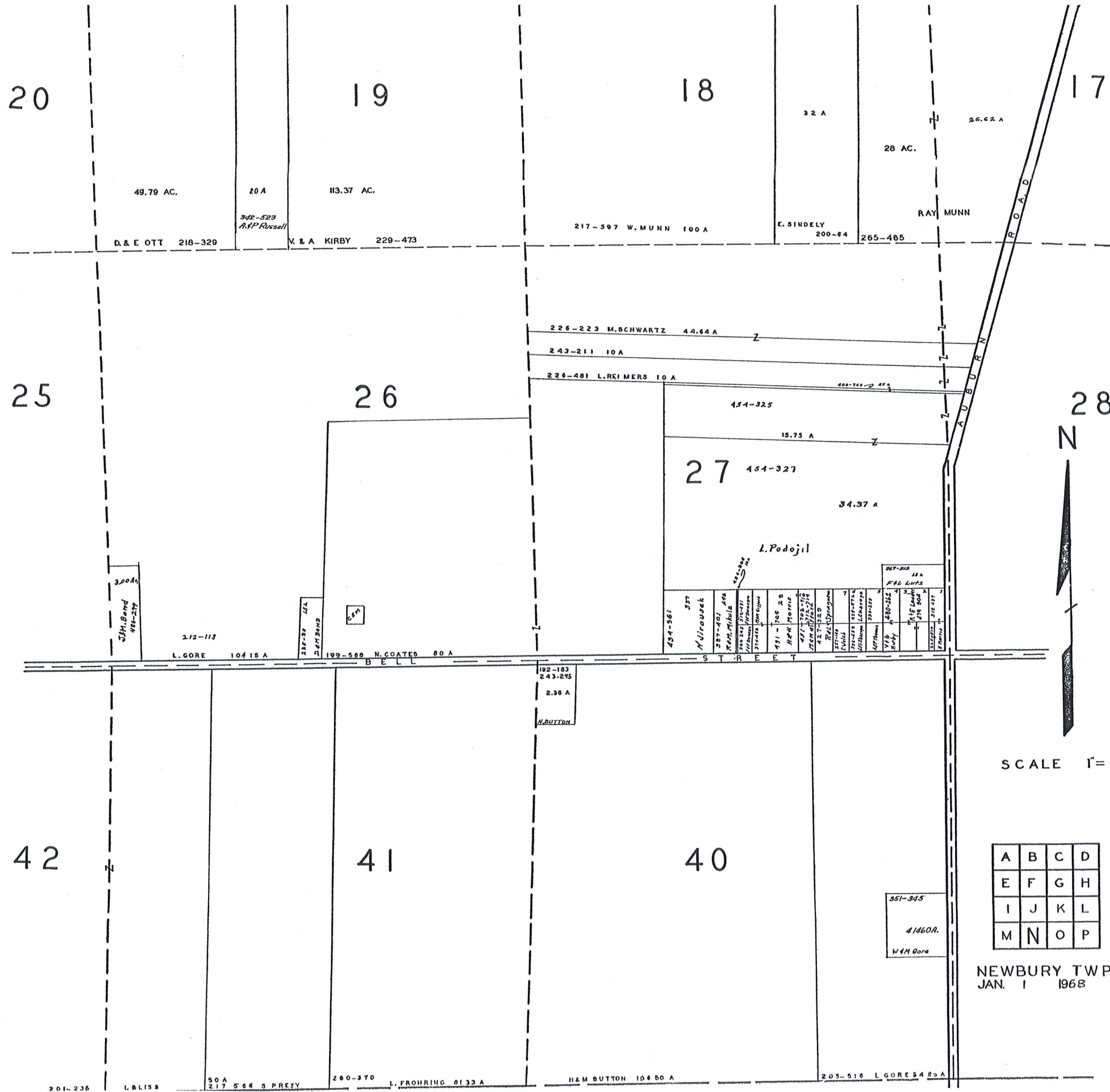
234-523 V. BENDOW

218-128 L. FROHRING

233-312 L. FROHRING

444-361

NEWBURY TWP. JAN. 1 1968



**NEWBURY
TWP - N
NOT TO SCALE
1968**

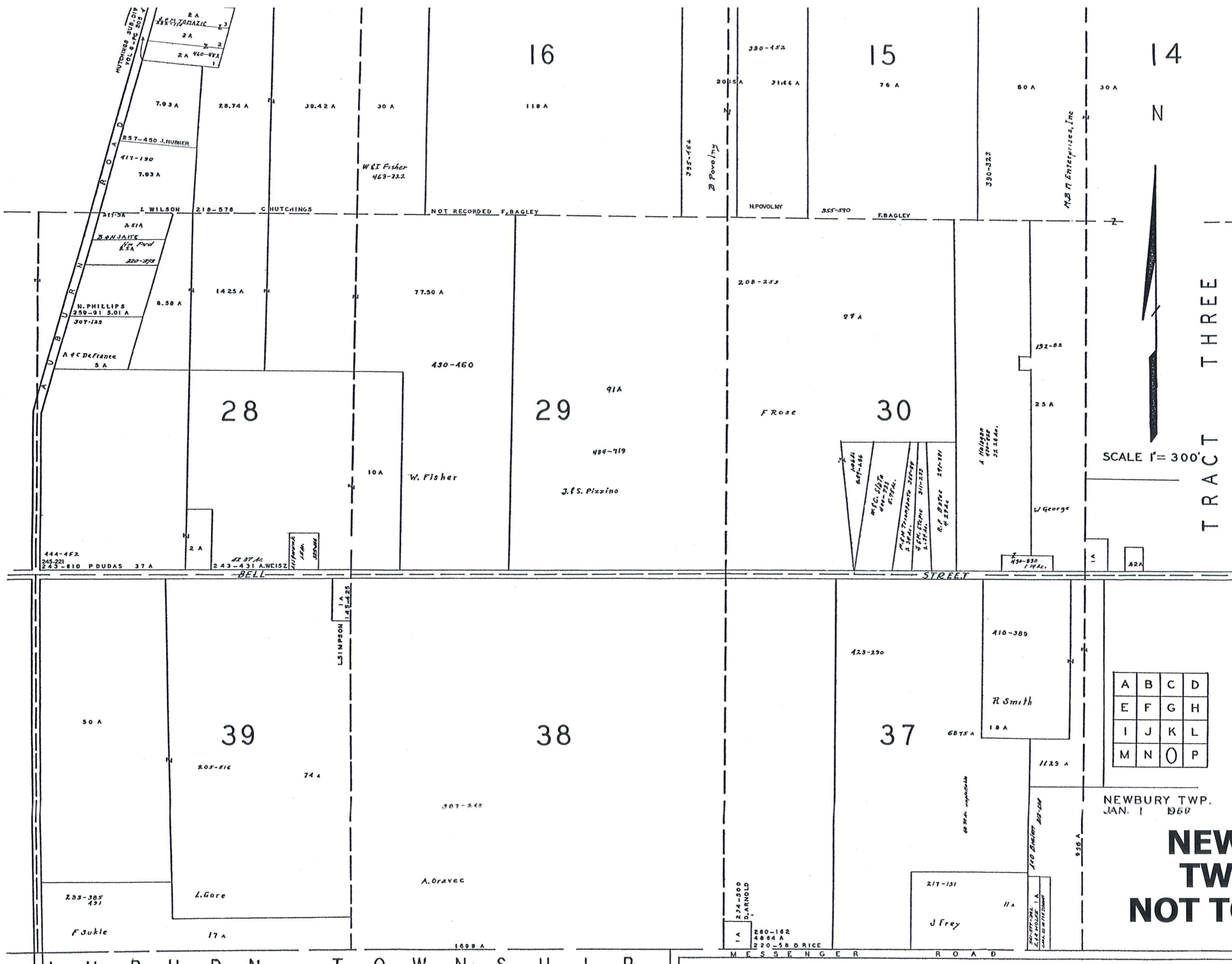


TRACT THREE

SCALE 1" = 300'

A	B	C	D
E	F	G	H
I	J	K	L
M	N	O	P

NEWBURY TWP.
JAN. 1 1968



SCALE 1" = 300'

TRACT THREE

NEWBURY TWP.
JAN. 1 1968

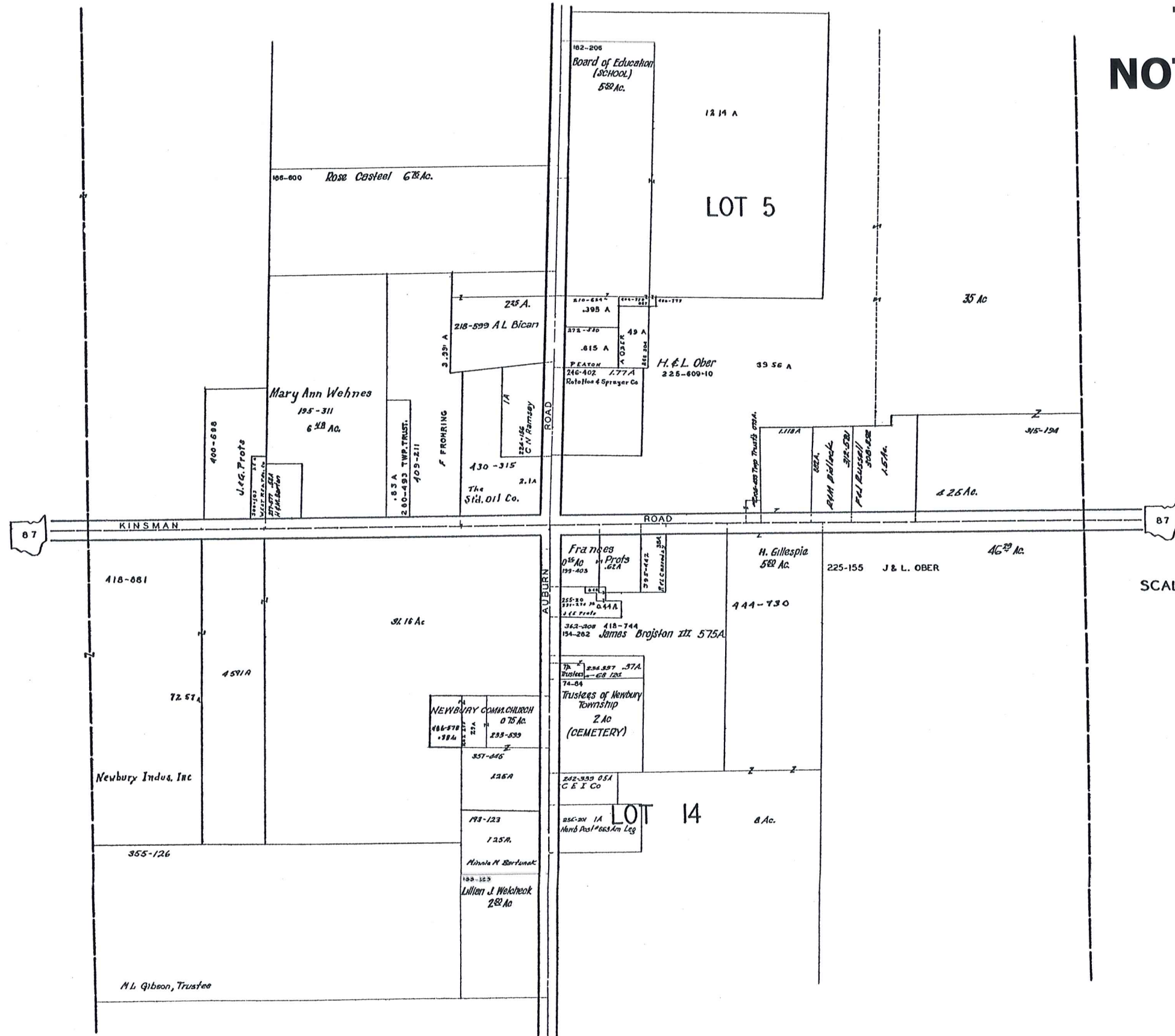
A	B	C	D
E	F	G	H
I	J	K	L
M	N	O	P

**NEWBURY
TWP - O
NOT TO SCALE
1968**

A I I R I I R N T O W N S H I P M E S S E N G E R R O A D

NEWBURY T.P. CENTER

**NEWBURY
TWP - Q
NOT TO SCALE
1968**

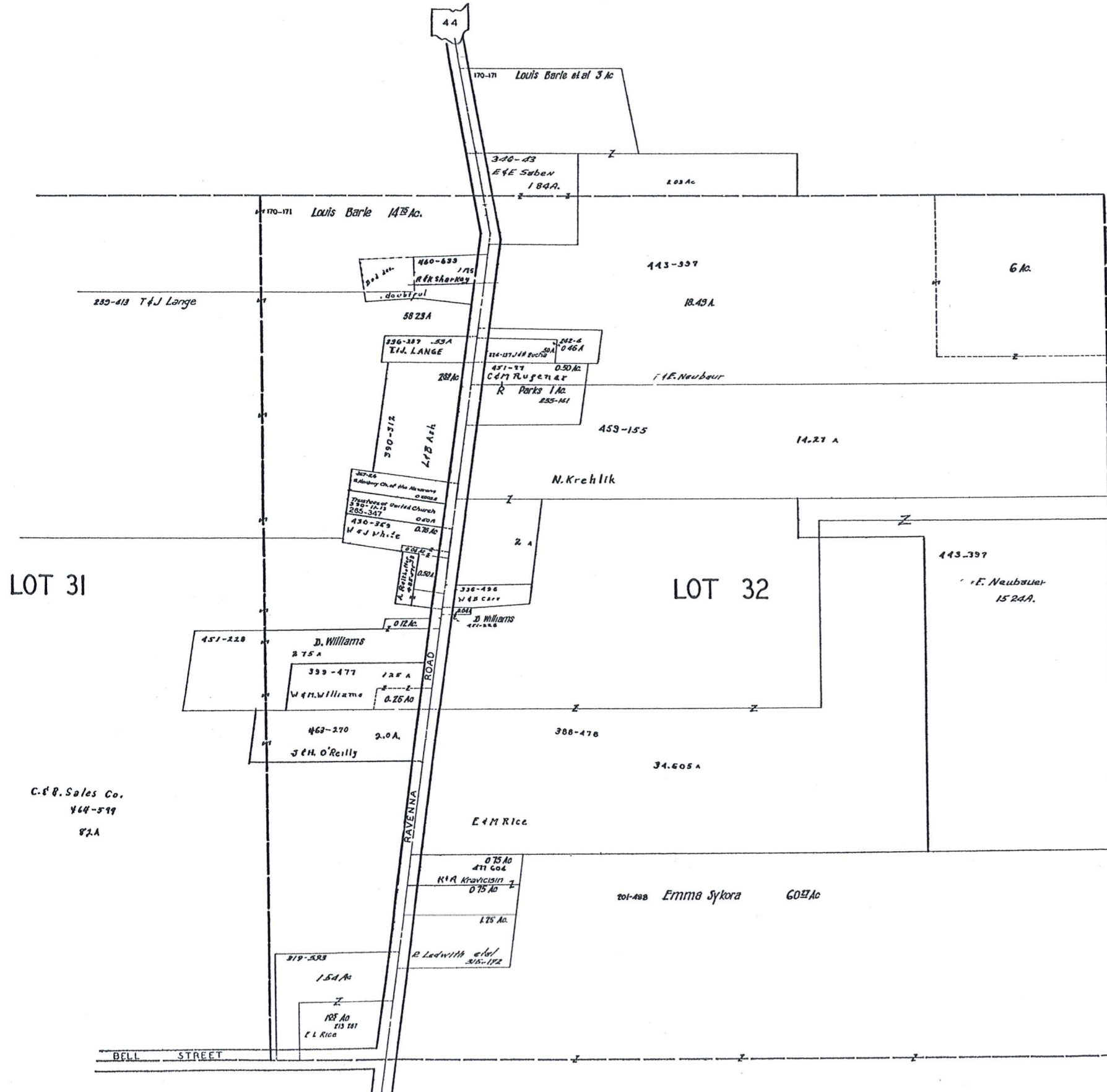


SCALE 1IN.=2.5CH.=165FT

JAN. 1, 1968

NEWBURY TP SOUTH NEWBURY

NEWBURY TWP - R NOT TO SCALE 1968

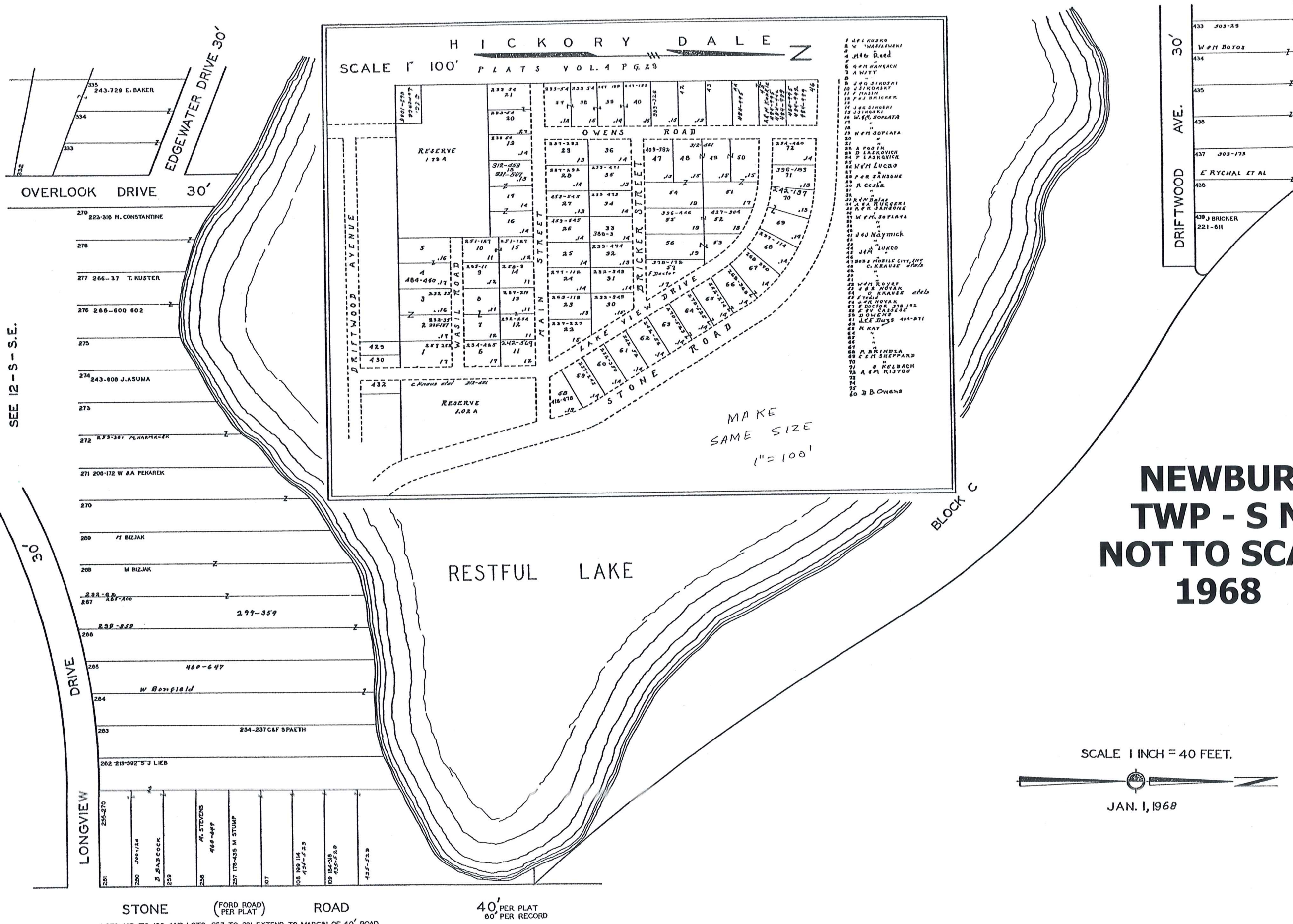


SCALE 1in.=2.5ch.=165ft.

JAN 1, 1968

THE RELIANCE INVESTMENT CO'S
RESTFUL LAKE ALLOTMENT

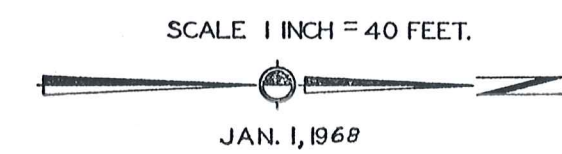
BEING PART OF ORIGINAL LOTS NOS. 3 & 16 OF TRACT 2 NEWBURY TOWNSHIP
VOL. 1 PAGES 56 & 57 REC. OF PLATS
SEE 12 - S NW



DRIFTWOOD AVE. 30'

433	JOS-28
434	W & H DOTOL
435	
436	
437	JOS-175
438	E RYCHAL ET AL
439	
440	J BRICKER 221-611

**NEWBURY
TWP - S NE
NOT TO SCALE
1968**

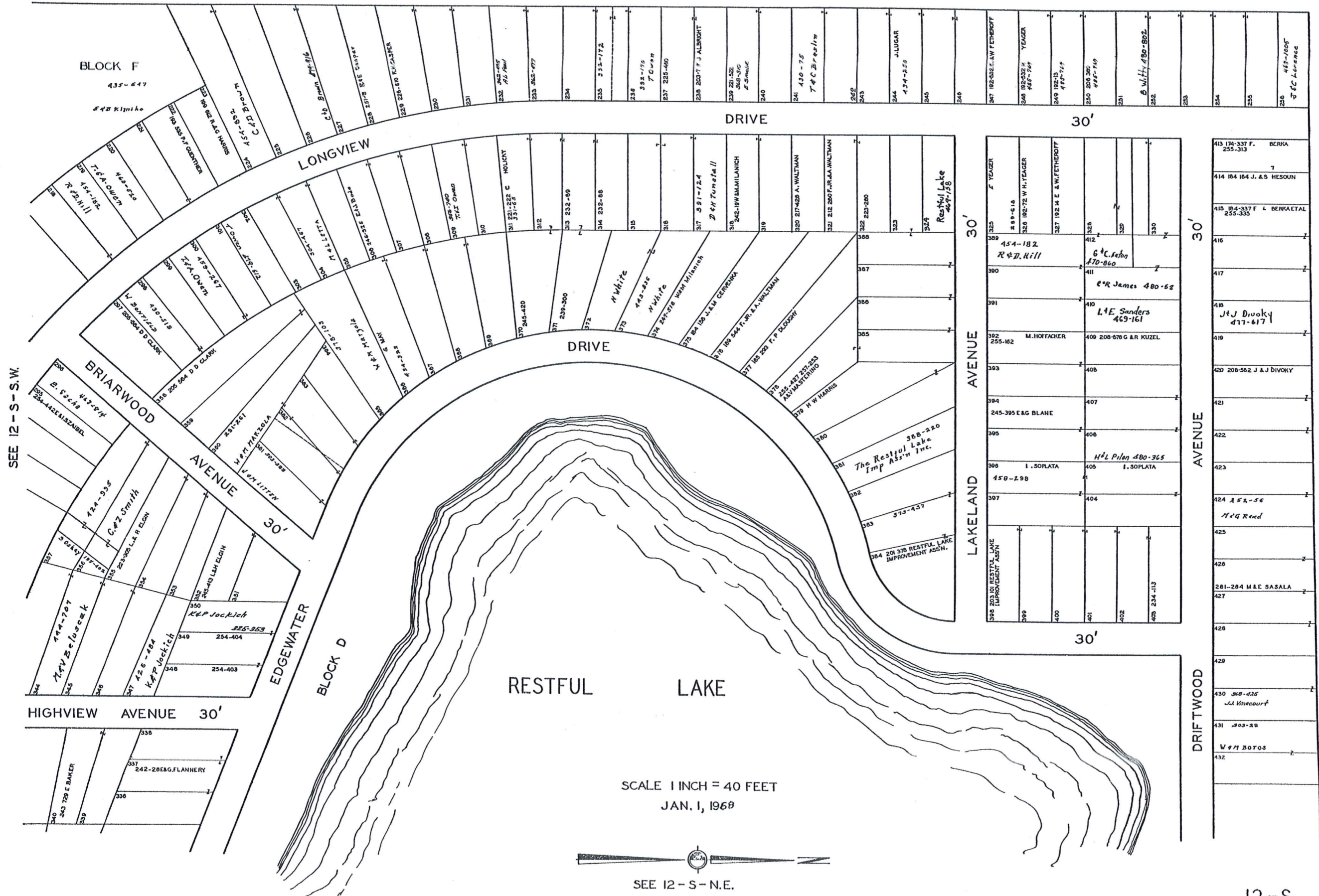


STONE ROAD (FORD ROAD) ROAD 40' PER PLAT 60' PER RECORD
LOTS 107 TO 109 AND LOTS 257 TO 281 EXTEND TO MARGIN OF 40' ROAD

12-S_{NC}

THE RELIANCE INVESTMENT CO'S
RESTFUL LAKE ALLOTMENT

BEING PART OF ORIGINAL LOTS NOS. 3 & 16 OF TRACT 2 NEWBURY TOWNSHIP
VOL. 1 PAGES 56 & 57 REC. OF PLATS



SEE 12-S-S.W.

SCALE 1 INCH = 40 FEET
JAN. 1, 1968

SEE 12-S-N.E.

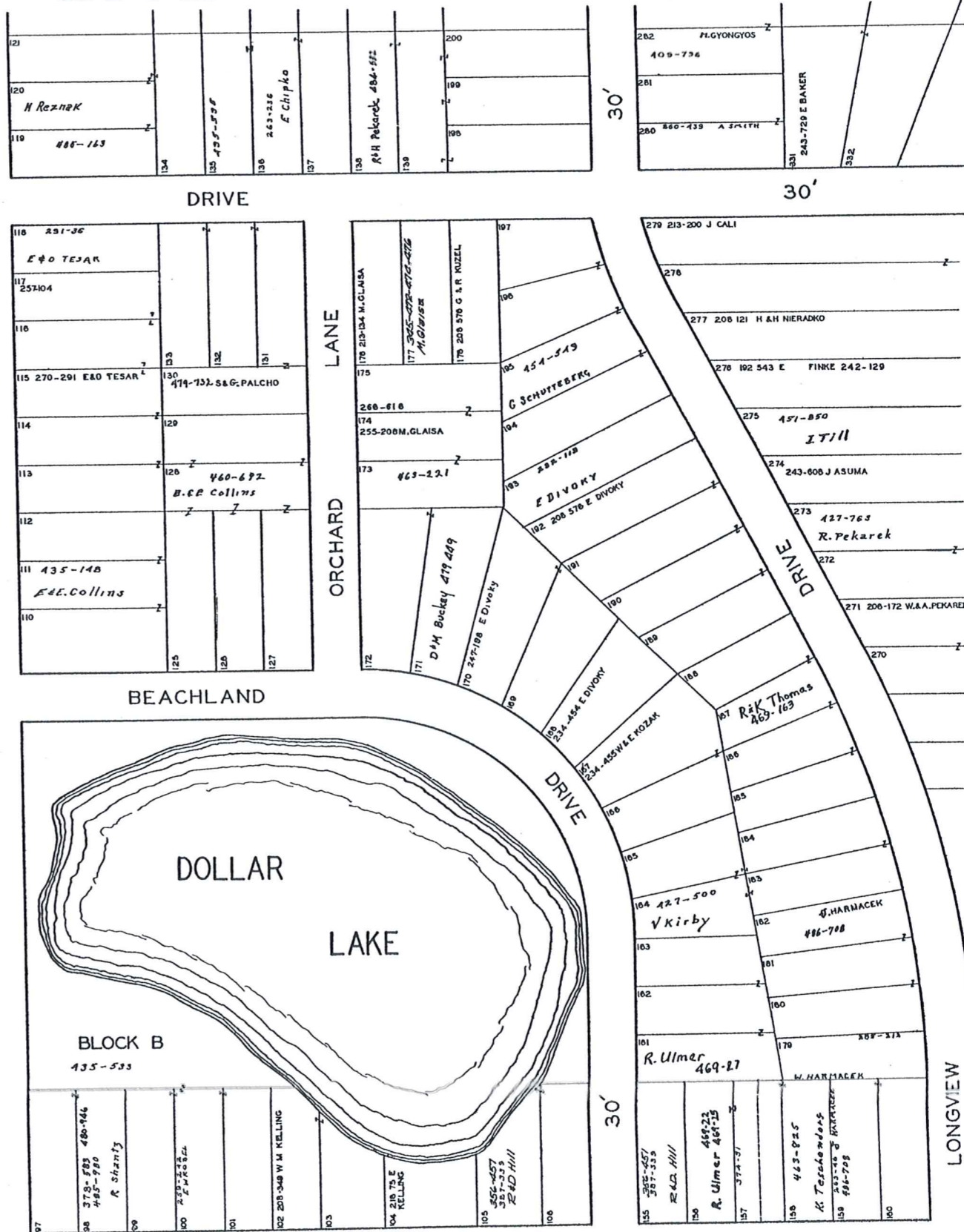
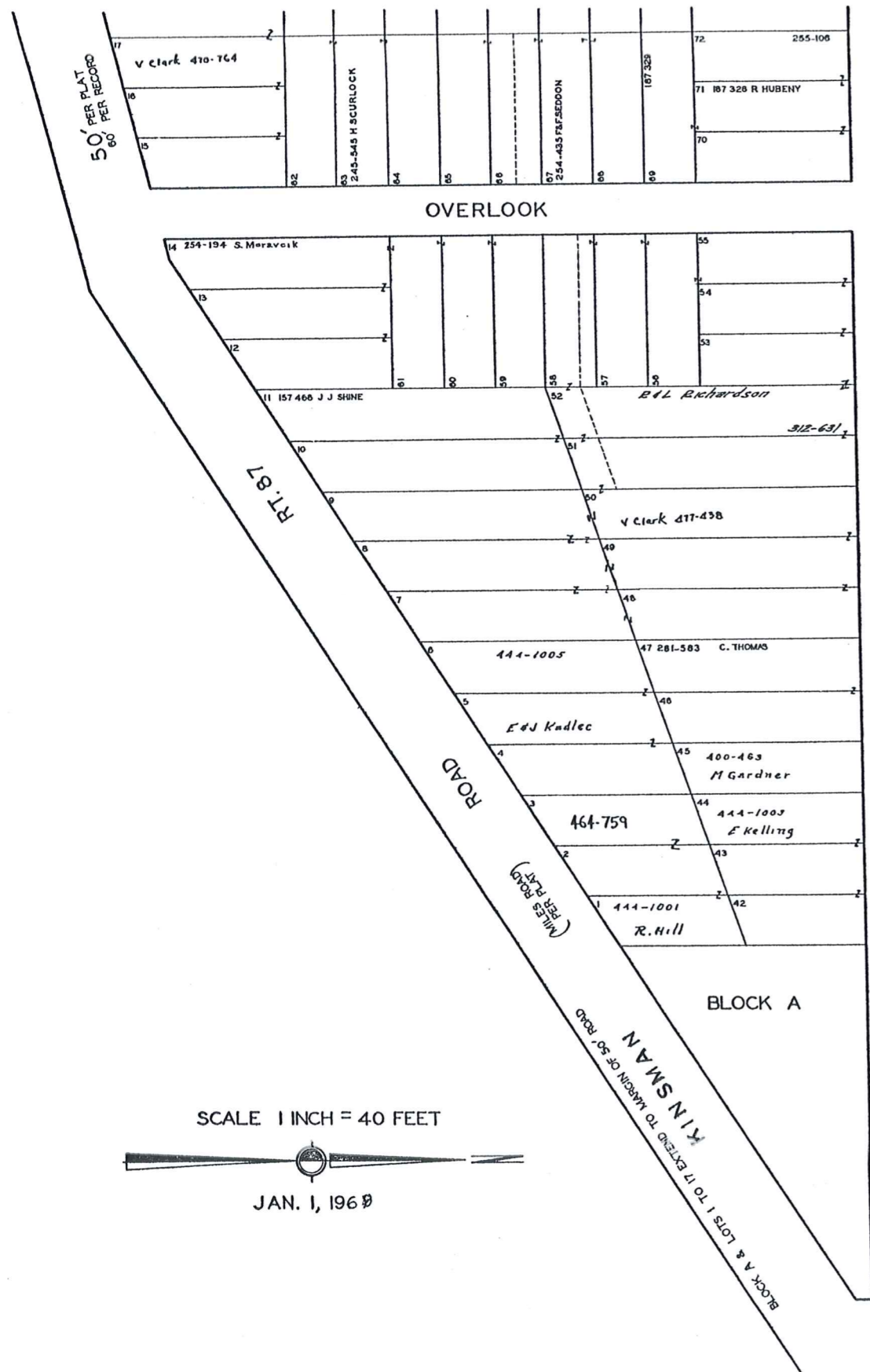
NEWBURY TWP - S NW NOT TO SCALE 1968

12-S N.W.

THE RELIANCE INVESTMENT CO'S
RESTFUL LAKE ALLOTMENT

BEING PART OF ORIGINAL LOTS NOS. 3 & 16 OF TRACT 2 NEWBURY TOWNSHIP
VOL. I PAGES 56 & 57 REC. OF PLATS

SEE 12 - S - S.W.



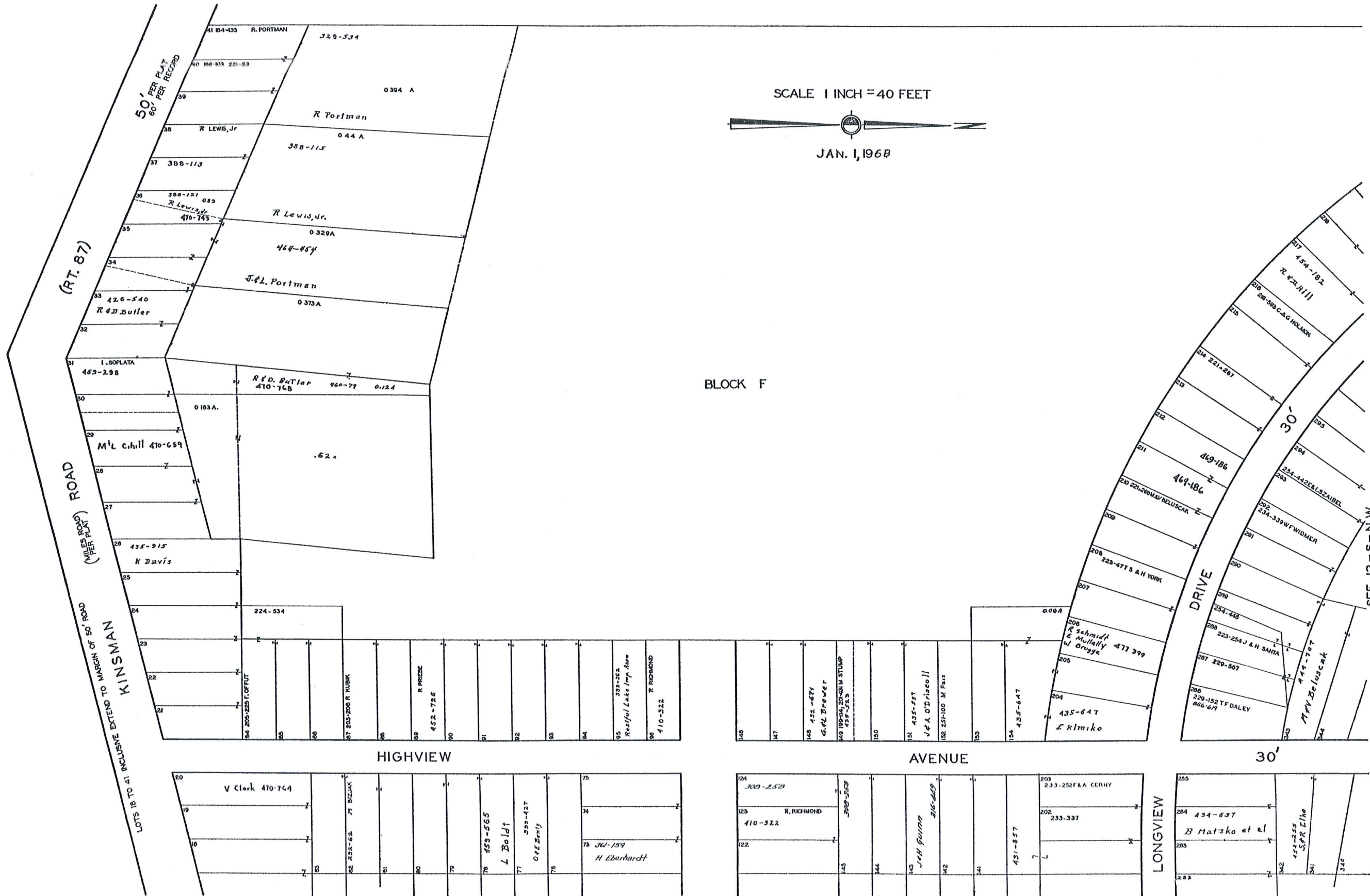
SEE 12 - S - N.E.

12-S.E.

NEWBURY TWP - S SE NOT TO SCALE 1968

THE RELIANCE INVESTMENT CO'S
RESTFUL LAKE ALLOTMENT

BEING PART OF ORIGINAL LOTS NOS. 3 & 16 OF TRACT 2 NEWBURY TOWNSHIP
VOL. I PAGES 56 & 57 REC. OF PLATS



NEWBURY TWP - S SW NOT TO SCALE 1968

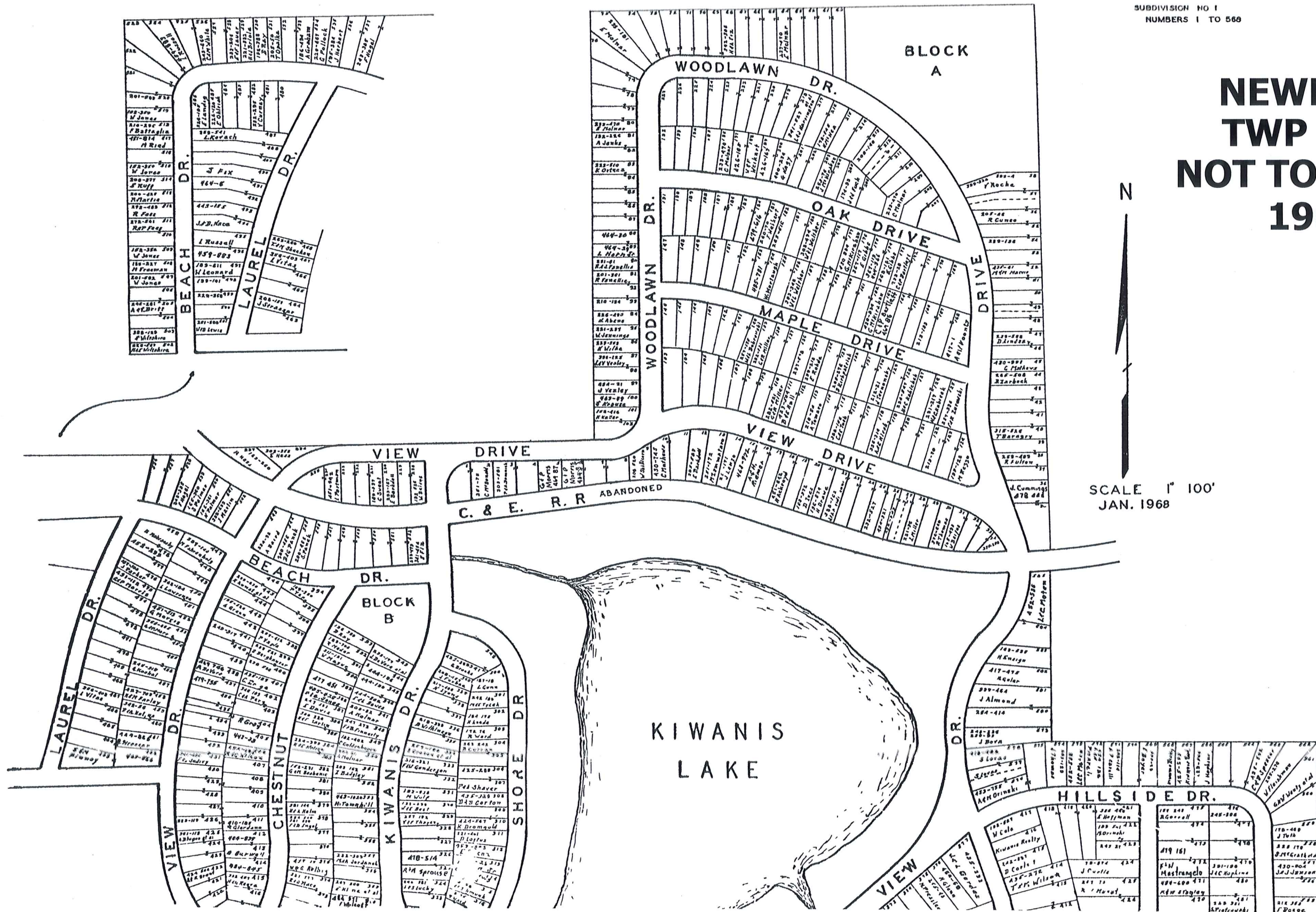
KIWANIS LAKE SUB.

VOL. 1-PGS. 44 TO 49 PLATS

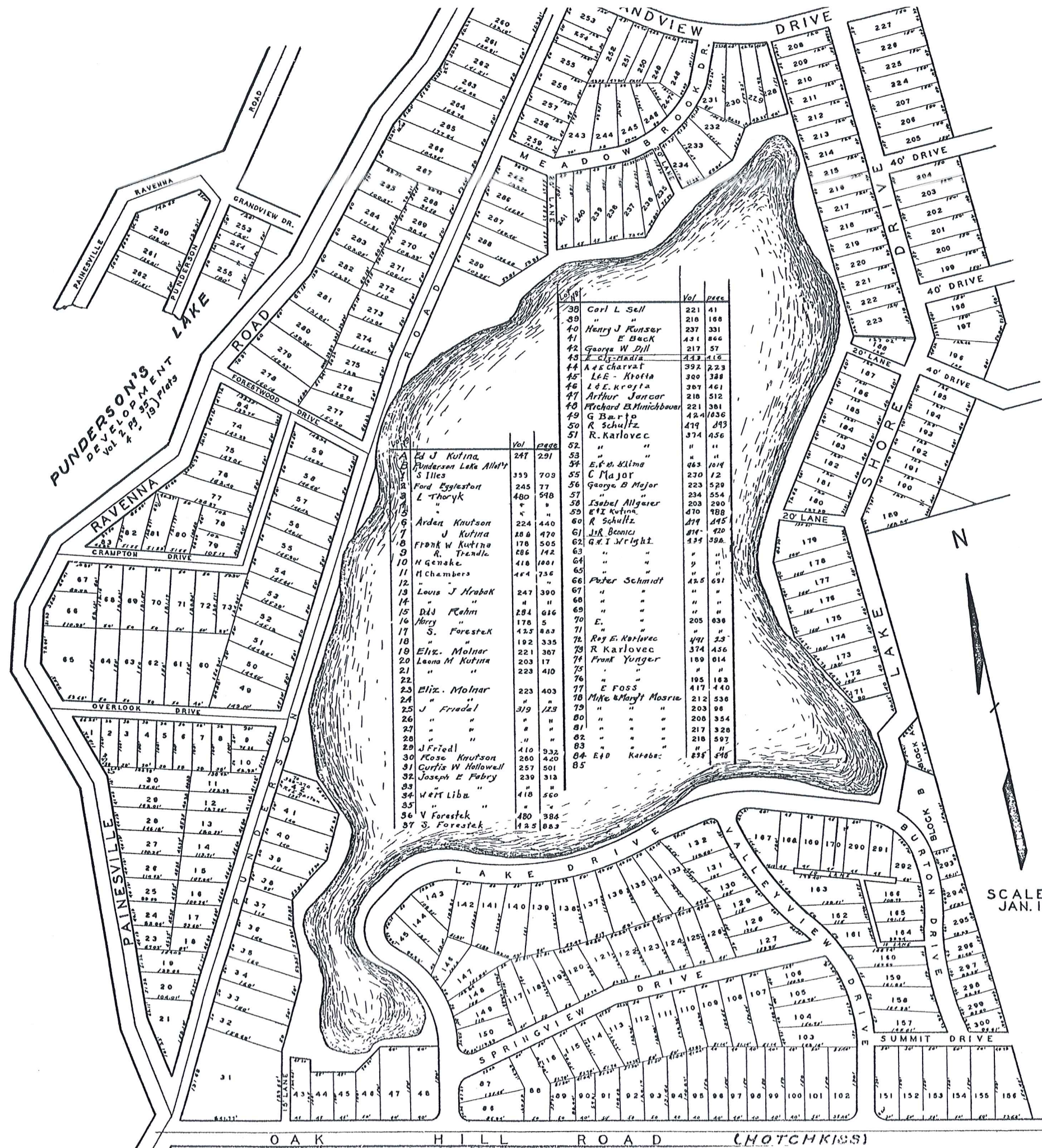
NEWBURY TWP LOT 24 TR. 1 & LOTS 3 & 4 TR. 2

SUBDIVISION NO 1
NUMBERS 1 TO 566

NEWBURY TWP - T1 NOT TO SCALE 1968



12-T-1



Lot No.	Owner Name	Vol.	Page	Lot No.	Owner Name	Vol.	Page
86	J & B Edvan	118	235	199	M Shupp	417	122
87	"	"	"	200	H Wagner	434	652
88	"	"	"	201	"	"	"
89	Charles F Bulan	203	590	202	"	"	"
90	M Kugelmeier	315	13	203	"	"	"
91	"	"	"	204	Funderson Lake Allot	"	"
92	"	"	"	205	Eva Johnson	239	508
93	S. & M. Tankovich	331	358	206	"	"	"
94	Gus George	233	310	207	"	"	"
95	"	"	"	208	R & G Ogirtt	351	236
96	"	"	"	209	"	"	"
97	"	"	"	210	"	"	"
98	"	"	"	211	"	"	"
99	"	233	189	212	"	"	"
100	"	"	"	213	E Johnson	387	422
101	"	"	"	214	c Schroeder	386	493
102	"	"	"	215	C. J. SCHROEDER	284	642
103	"	"	"	216	"	"	"
104	"	223	337	217	Virgil G. Storkley	229	365
105	"	"	"	218	Helen Hejduk	255	591
106	"	"	"	219	Wis Lipsky	480	121
107	"	"	"	220	T & R Martell	327	327
108	"	"	"	221	"	"	"
109	W & J Lee	431	243	222	P & J Surckla	377	47
110	"	"	"	223	" minus 1" see 188	"	"
111	R Stejkal	419	105	224	Eva Johnson	239	508
112	"	"	"	225	A & T Bell	307	77
113	Franklin J Broan	242	218	226	"	"	"
114	A. Sotarik	507	364	227	"	"	"
115	"	"	"	228	L & E Griner	296	358
116	"	"	"	229	"	"	"
117	S & H Horvath	376	277	230	Helen Kellocky	464	183, 517
118	"	"	"	231	B. Conroy	485	708
119	"	"	"	232	G. H. Ranter	470	110
120	J & M Mikonis	388	538	233	Blanche L. Shea	245	548
121	E & D Bushek	336	541	234	Frances E. Martin	257	37
122	Earl Bushek	245	400	235	Sal Franzolino	254	182
123	H. L. SHREVEN	443	195	236	R. S. Franzolino	482	304
124	"	"	"	237	B. Kaufman	184	622
125	"	"	"	238	Ralph E. Mumma	225	440
126	"	"	"	239	"	"	"
127	Michael Voloshen	225	557	240	"	225	500
128	"	"	"	241	Grace M. Everett	280	494
129	"	"	"	242	Leland K. Ridanour	254	493
130	Barney J. Dubscky	225	522	243	Ralph E. Mumma	225	500
131	"	"	"	244	"	225	440
132	"	"	"	245	"	225	338
133	"	"	"	246	Frances E. Martin	257	285
134	"	"	"	247	"	"	"
135	W. L. Sheldon	423	735	248	Charles Degro	259	590
136	Earl Bushek	245	400	249	"	"	"
137	Ernest T. Wickert	225	553	250	"	"	"
138	"	"	"	251	Charles Stohn	495	426
139	J & M Mikonis	388	538	252	Dorothy Arndt	438	426
140	Berbert A.	322	503	253	Anna E. Richards	352	186
141	"	"	"	254	"	"	"
142	George A. Kell	225	478	255	Andrew E. Elko	248	435
143	"	"	"	256	Jerna J. Knack	208	283
144	"	"	"	257	"	"	"
145	"	"	"	258	"	"	"
146	"	"	"	259	"	"	"
147	W. Friedl	270	372	260	Steve J. Dukowski	237	258
148	Edwin A. Schultz	233	309	261	J. J. E.	170	120
149	"	"	"	262	Walter Umanski	255	108
150	"	"	"	263	"	302	127
151	Gus George	233	310	264	"	241	429
152	"	"	"	265	Carl Bacon	315	52
153	M. V. Neuenstein	232	350	266	Howard C. Bacon	234	204
154	"	"	"	267	Carl H. Bacon	234	203
155	"	"	"	268	"	263	233
156	"	"	"	269	"	239	278
157	Isabel Fousek	233	318	270	Edna Protiva	427	680
158	"	203	254	271	"	"	"
159	Florence Cassidy	233	200	272	"	"	"
160	Vera Rider	243	153	273	Jean Hochmuth	239	289
161	Carl A. Johnson	233	92	274	G. F. Wood	367	634
162	"	"	"	275	S. H. Kerstner	458	278
163	"	"	"	276	"	"	"
164	F. Thompson	443	414	277	E. J. Kutina	410	488
165	Carl A. Johnson	233	310	278	G. C. Kerstner	479	65
166	"	"	"	279	"	479	67
167	Lillian Carr	257	411	280	G. F. Wood	367	335
168	"	"	"	281	"	362	122
169	"	"	"	282	"	"	"
170	"	"	"	283	Edna Protiva	427	680
171	R. Martell	480	594	284	"	"	"
172	"	"	"	285	Carl H. Bacon	234	202
173	I. A. Elliott	336	628	286	George B. Major	283	137
174	"	"	"	287	"	"	"
175	G. M. Barves	341	223	288	"	251	124
176	"	335	211	289	Ray M. Mumma	251	409
177	G. Barnes	409	367	290	F. Thompson	443	414
178	V. Wederthal	444	314	291	"	"	"
179	"	"	"	292	"	"	"
180	J. J. Manwar	336	557	293	A. VOLOSYN	426	715
181	"	"	"	294	"	"	"
182	J. S. Vaccarino	378	286	295	"	"	"
183	"	460	472	296	"	"	"
184	J. Teisman	461	737	297	"	"	"
185	George E. Graham	251	563	298	"	"	"
186	F. V. Galloway	423	527	299	"	"	"
187	Tony Miller	248	388	300	"	"	"
188	L. M. Shaw + J. L. Linn	484	780	"	"	"	"
189	J. Surman	426	434	"	"	"	"
190	"	"	"	"	"	"	"
191	K. T. McDonald	425	362	"	"	"	"
192	"	"	"	"	"	"	"
193	M. F. Szabo	233	235	"	"	"	"
194	"	"	"	"	"	"	"
195	"	"	"	"	"	"	"
196	J. H. Degro	134	865	"	"	"	"
197	"	"	"	"	"	"	"
198	"	"	"	"	"	"	"

SCALE 1" = 100'
JAN. 1 1967

NEWBURY TWP - Z NOT TO SCALE 1968